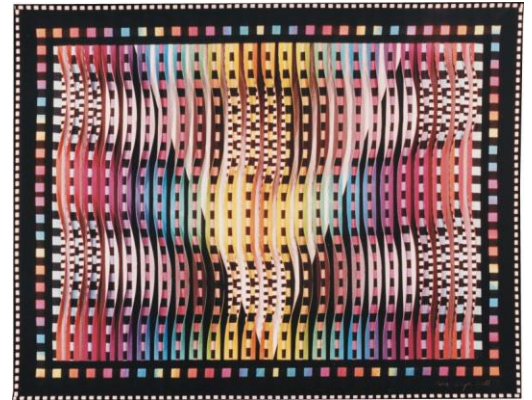


## Checking Over the Rainbow #11

- DESIGNED, PIECED, AND QUILTED BY: Caryl Bryer Fallert
- DATE: 1990
- SIZE: 56" x 43"
- COLORS: Rainbow hues, black, white & grey
- MATERIALS: 100% cotton fabric / 100% wool batting
- TECHNIQUES: Hand dyed, machine pieced, machine quilted
- IDENTIFYING MARKS: Signature & label
- OWNER: Private collection: Santa Barbara, CA (Destroyed in SantaBarbara wildfires of 2009.)



### *Design Concept & Process:*

This is part of a series in which 1/2" constructed tucks are incorporated into a pieced background. This is also the eleventh in a sub-series exploring various relationships between checks and gradations of rainbow colors. The background strips alternate between black 1" checks, arranged against a gradation of rainbow colors, and strips cut from a triangle, pieced in a gradation of black-grey-white. This alternation of images creates the illusion of a transparent grey triangle floating behind checks.

Each tuck is constructed from two different fabrics. The right sides of the tucks are a gradation of pure rainbow colors. The left sides of the tucks alternate between black and white checks and gradations of black-grey-white. The use of color and value gradations and the twisting of the tucks from side to side create the illusion of movement and light across the surface of the quilt.

The center of the quilt is framed by a border of rainbow colored 1" checks, floating in solid black, and a binding of black and white checks.

### *Exhibitions:*

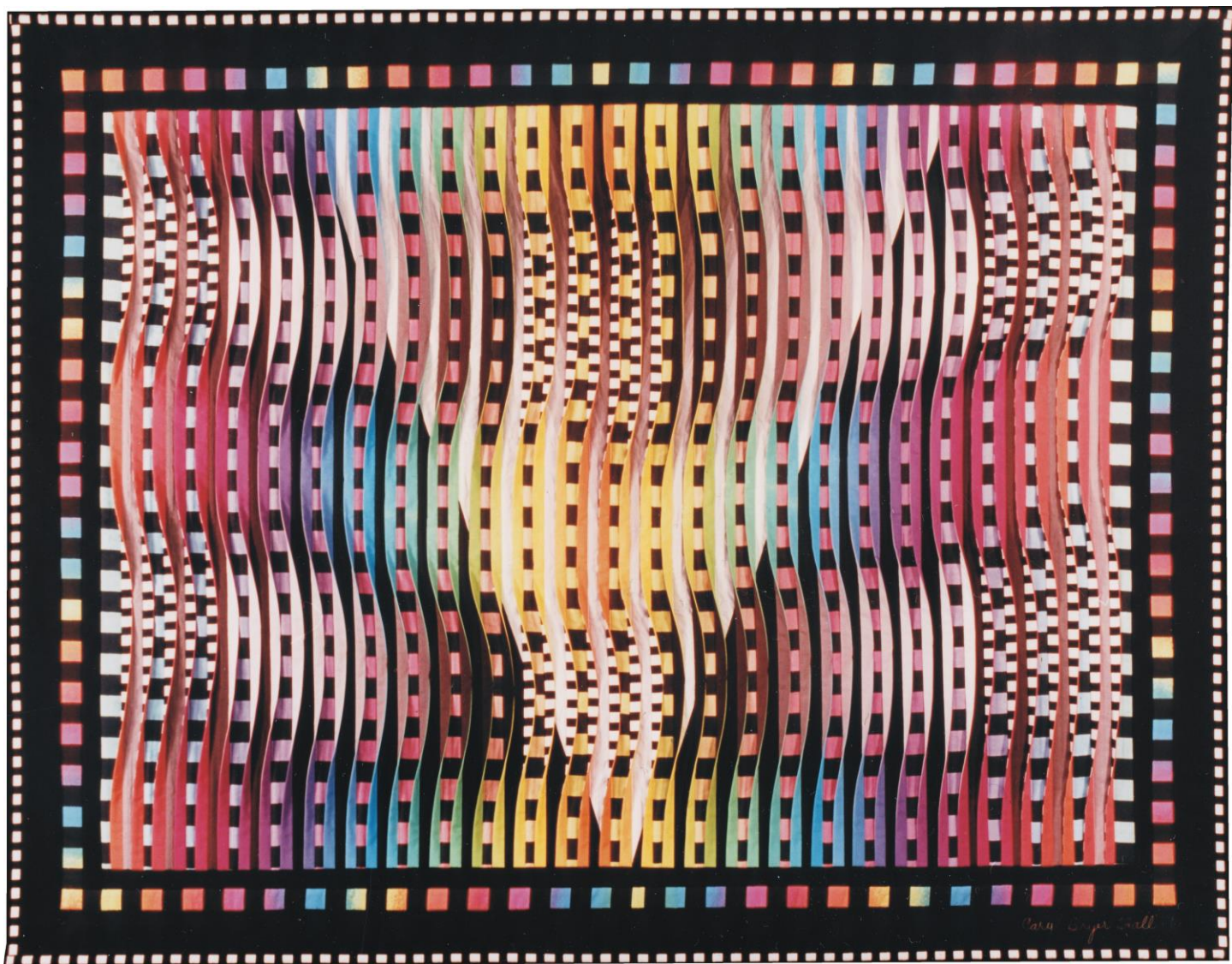
- Quilts as a New Art Form, Janis Wetsman Collection, Birmingham MI (invitational) 1991
- Unconventional Pile, Textile Arts International, Minneapolis, MN (invitational) 1991
- Paper/Fiber (National juried exhibit) Johnson County Arts Council, Iowa City IA (**Third Place**)
- National Quilting Assoc. Show, Bowling Green, OH 1992 (**First Place**)
- Materials: Hard and Soft, 1992, Greater Denton Arts Council, Denton, TX
- Jason Gallery 1992-93, Chicago, IL
- Crafts National, Zoller Gallery, Pennsylvania State University, 1993 (juried) University Park PA
- Northeast Quilts Unlimited, The Arts Center of Old Forge, 1993, Old Forge NY (**Third Place**)
- College of Dupage, Learning Resources Center, Dec. 1993-Jan. 1994 Solo Exhibition (Invitational) Glen Ellyn, IL
- Capitol Quilt Festival, 1994 (Invitational) Frankfort, KY
- Harvest of Time IV Quilt Show, 1994, McHenry County College, Crystal Lake, IL
- Recursos De Santa Fe, 1995 (invitational) Santa Fe, NM
- Threads GCCA, Mountaintop Gallery, Catskill, NY
- Pheasant Run Quilt Exhibit, Pheasant Run Expo. Center, St. Charles, IL

### *Publications:*

- The Daily Iowan, Iowa City, IA Friday, April 17, 1992 (Art Review)
- Fiberarts, 1992: Nov/Dec. p. 56
- Lexington Herald-Ledger, March 25, 1994, Weedender (**Cover**)

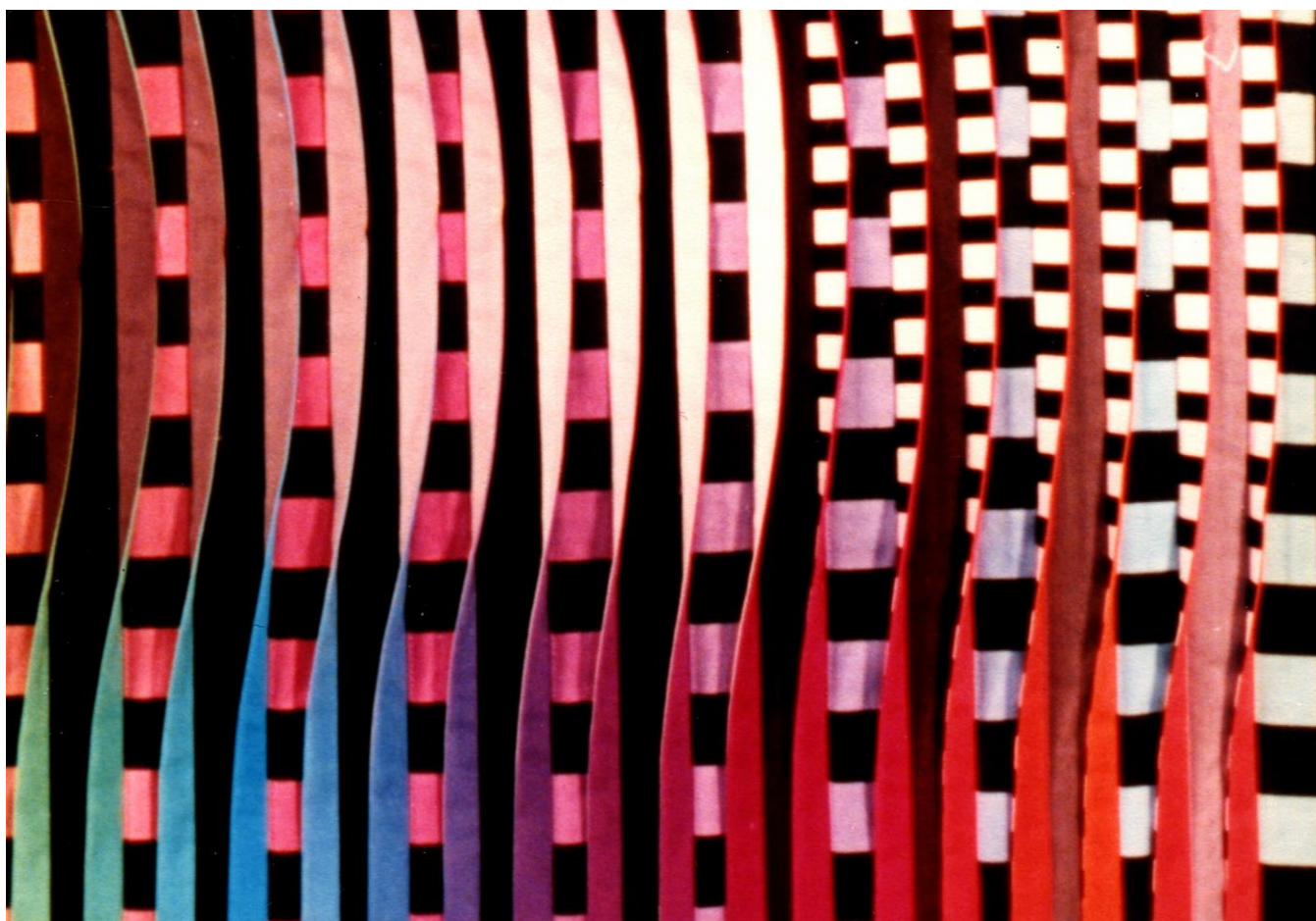
# CARYL BRYER FALLERT-GENTRY • QUILT ART RECORD

Bryerpatch Studio • caryl@bryerpatch.com • www.bryerpatch.com



Checking Over the Rainbow #11 • 56" x 43" • Copyright © 1990 Caryl Bryer Fallert





Checking Over the Rainbow #11 • 56" x 43" • Copyright © 1990 Caryl Bryer Fallert