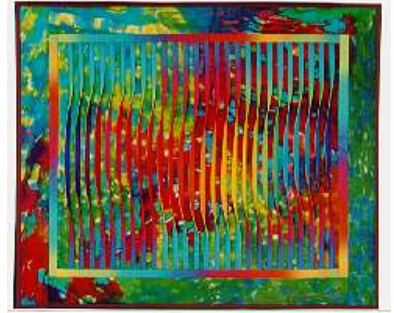


Reflection #36

- DESIGNED, PAINTED, PIECED, AND QUILTED BY: Caryl Bryer Fallert
- DATE: 1994
- SIZE: 33" wide X 29" high
- COLORS: blue, green, fuchsia
- MATERIALS: 100% cotton fabric / 100% wool batting
- TECHNIQUES: Hand dyed, hand painted, pieced, pleated, quilted.
- IDENTIFYING MARKS: Signature & label
- OWNER: Private collection
- PHOTO: Caryl Bryer Fallert



Design Concept & Process:

This is one of a series of quilts in which three dimensional, constructed tucks are incorporated into a patterned background. The background fabric was painted with fiber reactive dyes in an abstract, freeform, organic design.

Each of the 1/2" "tucks" was constructed from two different fabrics. The right sides of the tucks were made from fabrics dyed in a 26 shade gradation of fully saturated, pure rainbow hues. . The left sides of the tucks are a commercial fabric that appears to be painted in subtly graduated stripes of purple, blue, green, and fuchsia.. The use of graduated colors and values, and the twisting of the tucks from side to side, create the illusion of movement and light across the surface of the quilt. Because different colors are used on the right and left sides of the three dimensional tucks, the appearance of the quilt can be changed significantly by changing your point of view. I like to call the quilts in this series "viewer participation art."

The three dimensional center of the quilt is surrounded by a narrow border of the commercial fabric used on the left sides of the tucks, followed by a wider border of the hand painted background fabric.

Exhibitions:

- Southern Illinois Arts and Crafts Marketplace, Rend Lake, IL 1993-1995
- ART CENTER / OLD FORGE, 1997 (invitational solo exhibition in conjunction with Northeast Quilts Unlimited) Old Forge, NY
- Brannigans Art Gallery, Hillsborough, NC

Publications:

- None

CARYL BRYER FALLERT-GENTRY • QUILT ART RECORD

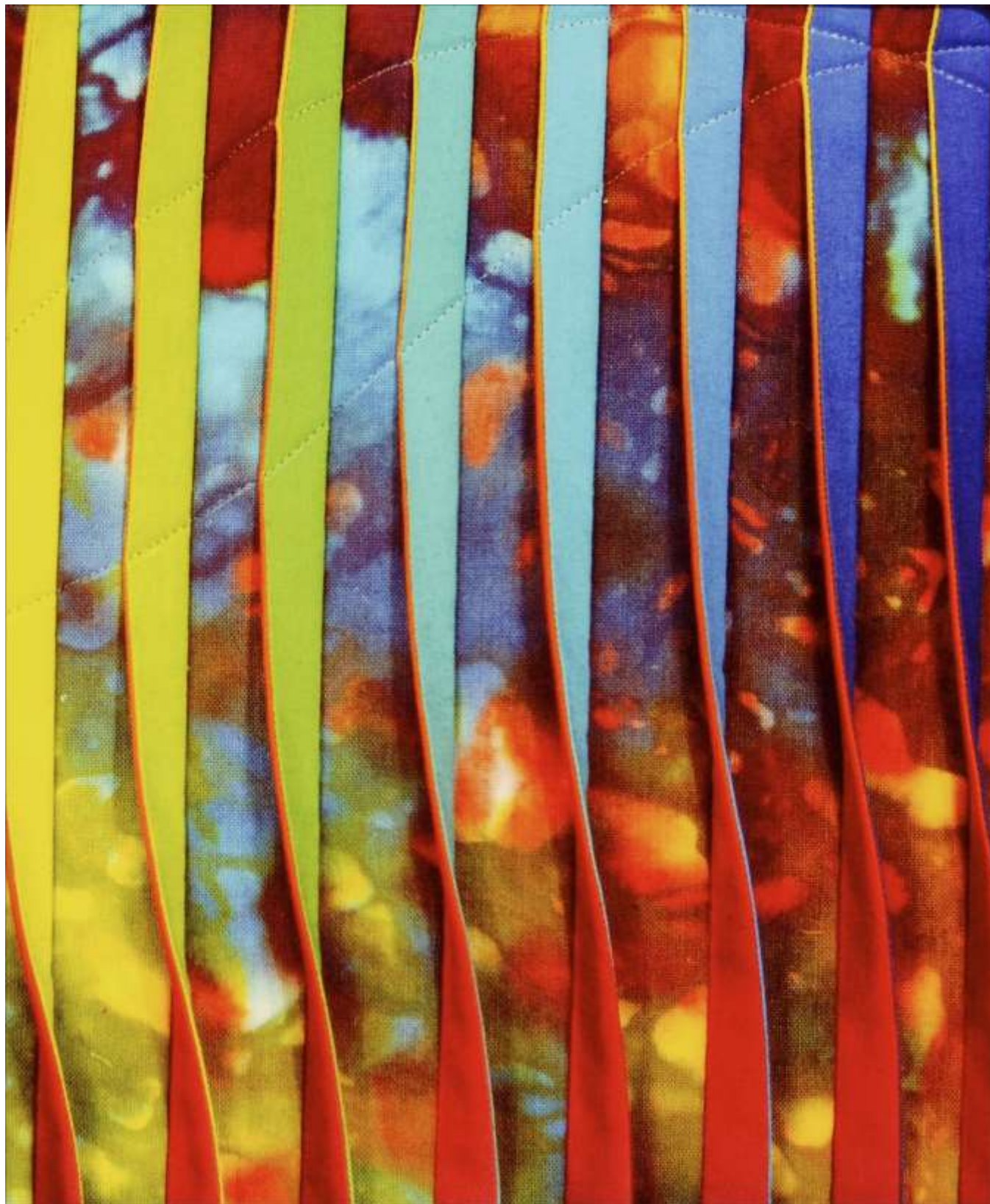
Bryerpatch Studio • 10 Baycliff Pl. • Port Townsend, WA 98368 • caryl@bryerpatch.com • www.bryerpatch.com



Reflection #36 • 33" x 29" • Copyright © 1994 Caryl Bryer Fallert • Bryerpatch Studio • www.bryerpatch.com

CARYL BRYER FALLERT-GENTRY • QUILT ART RECORD

Bryerpatch Studio • 10 Baycliff Pl. • Port Townsend, WA 98368 • caryl@bryerpatch.com • www.bryerpatch.com



Reflection #36 (detail) • 33" x 29" • Copyright © 1994 Caryl Bryer Fallert • Bryerpatch Studio • www.bryerpatch.com