

Creative Precision String Piecing

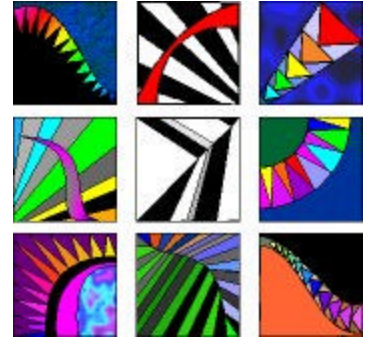
By Caryl Bryer Fallert

2031 Collins Rd. • Oswego, IL 60543 • 630-554-1177 • www.bryerpatch.com • caryl@bryerpatch.com

One Day Workshop / Advanced Beginner – Intermediate / Hands-on

Description:

Learn to draw and piece colorful, luminous, freeform designs with absolutely precise seams using this simple method of piecing on a paper base. This old traditional technique has recently come to be known as paper foundation piecing. Precision String Piecing can be used in either quilts or clothing, and with either traditional or original designs. Emphasis will be on color selection as well as sewing techniques. Students will design and create 2-3 small samples. Possibilities include "Flying Geese" in a graduated curve and several variations on "Crown of Thorns."



Student Supplies Needed: For the latest updates to this list please check

<http://www.bryerpatch.com/wkshops/creatprecisionstrngpcngsup.htm>

Fabric:

1. Fabric: You will need at least two different gradations of color and value with six to eight colors and values in each gradation. Fabrics dyed in color and value gradations will be available for sale in the class or you may bring them from home. Preview at: <http://www.bryerpatch.com/cgi-bin/Store/store.cgi> The more colors you have to choose from, the more colorful your project will be. The results you get will be much more dramatic if you choose solid colors or very low contrast prints. Fat quarters or fat eighths of each color will be enough. . If you dye your own fabric in color or value gradations, these will be useful
2. Bring a few larger print fabrics to use as backgrounds for your precision piecing. A limited selection will be available for sale.

Sewing Machine:

1. One that is friendly and well adjusted. A zigzag, as well as straight stitch is recommended but is not absolutely essential. You must know how to operate your sewing machine
2. If you own an open toed embroidery foot, bring it along.

Other

1. Thread: medium gray or other neutral
2. Clear and smoke colored Monofilament (nylon is OK, but polyester (Superior Mono-Poly or Sulky "invisible") is recommended)
3. Long, heavy-duty extension cord with at least two outlets. Three prong adaptor if needed for classroom outlets
4. Basic Sewing Kit for hand and machine sewing.
5. Iron Preferably with steam
6. Table Top Ironing Pad

7. Scissors (for paper and fabric)
8. Scotch Brand Magic Tape (or other non-shiny cellophane tape)
9. Glue Stick
10. Rotary Cutter, and Ruler
11. Drawing Tools: Fine point Sharpie marker, flexible curve, pen, pencil, ruler, eraser, compass
12. Cotton swab or small watercolor brush
13. A few sheets of plain white copier paper
14. Freezer paper (3-4 feet)
15. Niagara spray starch. You don't need the whole can, just squirt some into a small spill-proof bottle.
16. Postcard or index card
17. Litter bag

Optional:

1. Small Portable Light Box (If you are driving and already have one)

Creative Precision String Piecing / Caryl Bryer Fallert / page 2

Fee: \$700 (\$750.00 after January 1, 2005)

Number of Students:

25: space and electrical power permitting

Room Setup:

I will provide my own projector. You will need to provide

1. Projector stand
2. Electrical connection
3. Screen, large foam core board, or white wall
4. Two or more tables for setting up a display and demo
5. Table space with enough room for each student to work at a sewing machine, with a large cutting board and iron next to it. (Ideally, one table per student)
6. Room must have adequate lighting and ventilation.
7. Please see preferred classroom setup: <http://www.bryerpatch.com/wkshops/roomsetup.htm>
8. Room must have outlets and electrical capacity to support sewing machines and at least one iron for every four students. Access to the circuit breaker box is also important in case this is miscalculated.