

Creative Precision String Piecing

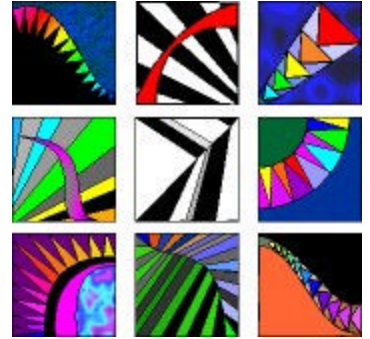
By Caryl Bryer Fallert

502 N. Fifth St. – Paducah KY 42001 – 270-444-8040 - www.bryerpatch.com - caryl@bryerpatch.com

Three Hour seminar – all levels

Description:

Learn to draw and piece colorful, luminous, freeform designs with absolutely precise seams using this simple method of piecing on a paper base. This old traditional technique also known as “paper” or “foundation” piecing can be used in either quilts or clothing, and with either traditional or original designs. Emphasis will be on color selection as well as sewing techniques. Students will make sample drawings of five different kinds of patterns, and do a simple exercise in arranging intersecting color gradations.



Student Supplies Needed:

1. 15-20 sheets of plain white copier paper
2. Drawing Tools:
 - > pen
 - > pencil
 - > ruler (preferably clear thin rulers 6” and 12” but bring what you have)
 - > eraser
 - > paper scissors
3. Optional
 - > Flexible Curve (available at art supply and office supply stores in the drafting department)

Kit fee: \$5.00

Creative Precision String Piecing / Caryl Bryer Fallert / page 2

Fee: \$700 (\$750.00 after January 1, 2005)

Number of Students:

25: space and electrical power permitting

Room Setup:

I will provide my own projector. You will need to provide

1. Projector stand
2. Electrical connection
3. Screen, large foam core board, or white wall
4. Two or more tables for setting up a display and demo
5. Table space with enough room for each student to work at a sewing machine, with a large cutting board and iron next to it. (Ideally, one table per student)
6. Room must have adequate lighting and ventilation.
7. Please see preferred classroom setup: <http://www.bryerpatch.com/wkshops/roomsetup.htm>
8. Room must have outlets and electrical capacity to support sewing machines and at least one iron for every four students. Access to the circuit breaker box is also important in case this is miscalculated.